



---

## Castle Blocks

*Non-combustible and made of MICRO-ROCK<sup>®</sup>*

---

- **The Castle Blocks** are made of *Micro-Rock<sup>®</sup>* architectural stone finish, dimension of 10'' x 18'' x 3/8'' thick, it is very light, little lower than 3½ lbs. per piece. Each sides is beveled, which has the effect of a **V** lines between each piece when installed, allowing you to support them against each other, which is intended to avoid putting a cement seal or other between each block .
- No changes or modification to the walls structure is necessary. It can be used around your home, behind an extra stove, or on any wall in regular gypse or drywall or inside the house.
- The Stone Finish Castle blocks, is offered in 7 choices of colors as beautiful colors as each other. For a perfect decorative arrangement in every existing decorations or others.
- The Stone Finish Castle Blocks is a guaranteed Quebecers product and manufactured here in Laval, Quebec, Canada.



### **IMPORTANT NOTE**

1. - Read the entire instructions for installing and be sure to understand everything before starting the installation of BLOCKS. If necessary, check with your dealer or the manufacturer 1-888-592-9537 for additional information. We cannot be held responsible for inadequate installation or mishandling.
2. - Always handle the pieces with care.
3. - **Never use chemical cleaning product, a damp cloth is sufficient.**
4. - BLOCKS have received a water natural stone sealer in factory. Put sealant to only every 2 years.



---

## INSTALLATION STEPS FOR CASTLE BLOCKS

- Take your time when installing, often saves time.

**CAUTION: Wear safety goggles and all necessary safety equipment**

---

- CAN BE CUT WITH:**
- OLFA KNIFE AND A RULER
  - WATER TABLE SAW (*WITHOUT WATER*)
  - GRINDER
  - SLIDING SAW
  - HANDSAW

**IMPORTANT :**  
**NEVER USE A JIGSAW**

- CAN BE INSTALL WITH:**  NAIL AIR GUN (*NAIL 1¼" 18 gauge BEST!*)

*Avoid too long nails if you do not know what's behind the drywall.*

- SILICONE LATEX ACRYLIC >>> *optional but not necessary*

**NB:** The advantage of the air gun nailer is that you can remove the blocks with minimal loss and reinstall them later. Just use finish nails 1 " to 2 " inches and nail it at the angle of about 15 degrees, 2 to 3 nails are enough to install each CASTLE Blocks.

***ATTENTION:*** *Note that it is very important, if you install the blocks on a Duroc panel, always nail the front, because if you put nail in the corner, the nail may bend and come out in front of you and hurt your hand.*

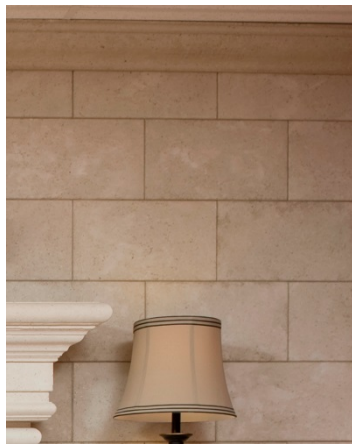
### **INSTALLATION :**

1. To begin the installation, it is best to start at the **top** with the Castles blocks immediately under the O'gee if you have one, and finished down the wall.
2. Install directly on a wall ideally drywall (gypse or gyproc), or plywood, concrete wall or "DUROC" panel.
3. When you cut a block, you can redo the beveled angle (which will reduce losses), with the furnished sanding block, grain 40, provided with each box of 10 Castle blocks.
4. There are several ways to install the blocks, view photos as an example.
5. Never nail systematically in each corner, to avoid noticing the nails. You must put them randomly, making them untraceable without having to fill them.
6. **For corners 45° and 90°:** Always do a first cut at 90° to the right place and the degree, cut in the side of the piece referring to the front of the blocks.
7. **To seal the corners:** Once the blocks well secured with nails, if needed, but not necessary, put the acrylic latex silicone to ensure that the blocks corners will not move at all.
8. Use sandpaper to level off the corner and everything.
9. Pass the vacuum on the blocks to remove any dust.

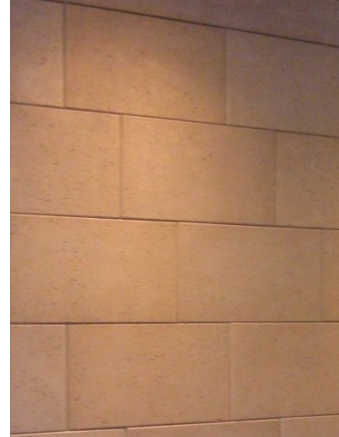
10. Use covering tape (masking tape) 2" wide to put on each side of the opening, leaving only the opening to fill.
11. Prepare the mixture as directed on bag (**important to make small quantities at a time**), the product freezes quickly.
12. Apply the mixture to make it penetrate between the two parties (opening) and don't make it too thick and unnecessarily thick, make only approximately 2 linear feet at a time.
13. Place an Olfa knife blade above the covering tape (masking tape) to remove any excess mixture product
14. Repeat steps 11 to 13 until the corner is actually stationary.
15. Remove the tape covering (masking tape) and pass a second time Olfa knife blade to remove the excess that remains will be the thickness of the covering tape (masking tape).
16. Allow about 30 minutes and use a damp cloth to standardize the color of the corner.

NB: It is normal for efficient stoves, a part of the center pales a bit which makes them a more natural effect.

## Examples: How to install the blocks



**Offset 1/2 full, half, full etc.**



**Offset 1/3, 2/3, full,  
1/3, 2/3, full, etc.**